



Newbold Terrace, Leamington Spa, CV32 4HD



# Property Description

\*\*\* AVAILABLE MID-APRIL - GARAGE INCLUDED - DEPOSIT ALTERNATIVE AVAILABLE \*\*\* This mid floor one bedroom flat boasts stunning views over Mill Gardens and is ideally positioned close to the train station and town centre, which hosts an array of independent restaurants, bars and shops.

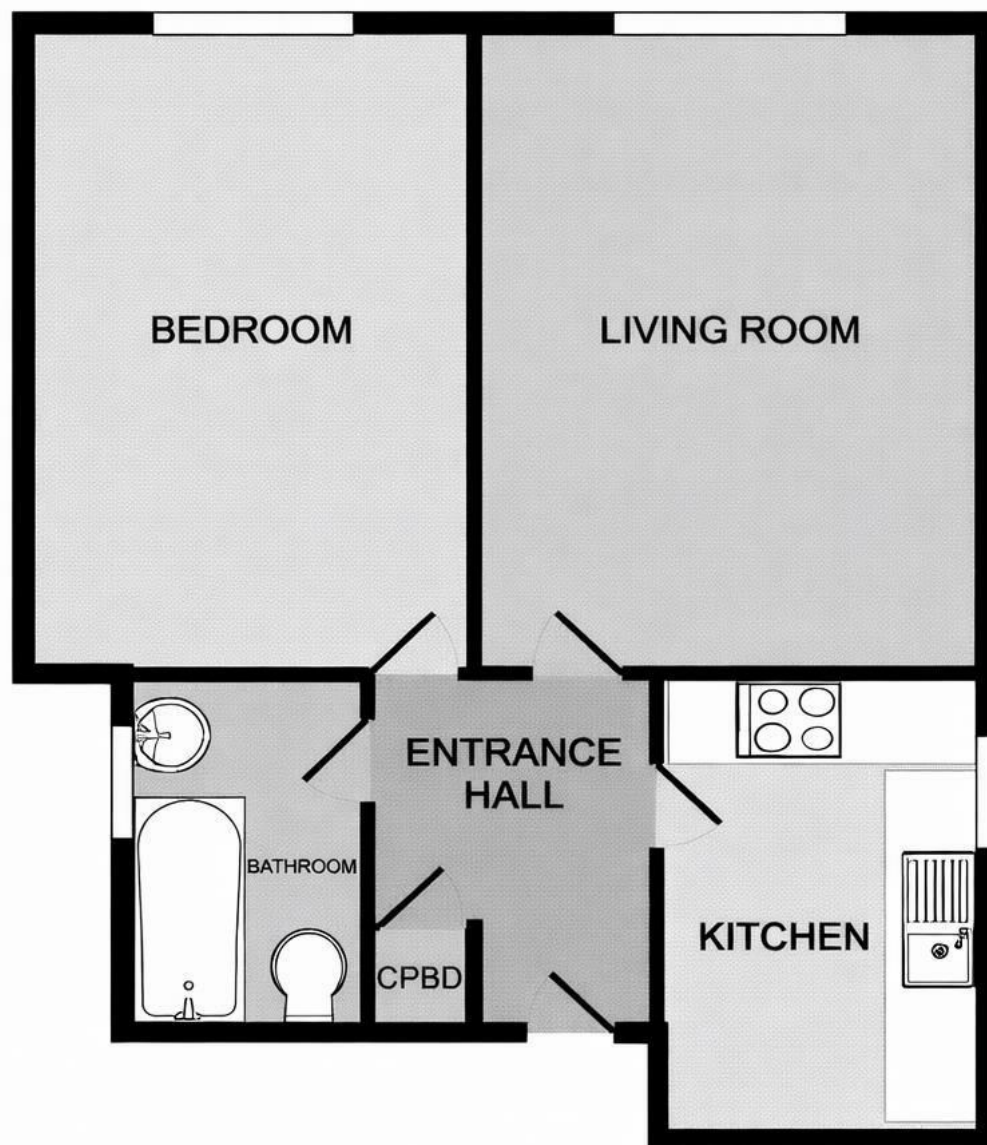
This property comprises in brief: Secure communal entrance with a lift to all floors, hallway with storage cupboard, kitchen with appliances included (washing machine and fridge/freezer). Spacious living room with dining space, double bedroom with double bed, mattress, wardrobe and chest of drawers included and bathroom with full suite including shower over bath and heated towel rail.

With a garage included and on street parking this home is offered PART FURNISHED (as pictured). Council Tax Band C. Energy Rating D. Sorry NO PETS allowed due to headlease stipulations. \*\*Redecoration to take place in between tenancies to include minor kitchen upgrade \*\*









TOTAL APPROX. FLOOR AREA 500 SQ.FT. (46.5 SQ.M.)

## Key Features

- AVAILABLE MID APRIL
- Leamington Spa
- One Bedroom
- Mid Floor Flat
- Part-Furnished
- Excellent Location with Mill Gardens View
- Garage Included & On Street Parking
- Council Tax Band C
- Energy Rating D
- NO PETS ALLOWED - Due to Headlease Stipulations

**£1,025 PCM**